

## **LIGHT GAUGE FRAMING SYSTEM (LGFS)**

LOHAAR is one of the Uttarakhand leading and most respected company in the field of LGFS Solutions in INDIA. It has continuously introduced innovative and modern building products with a promise of strength, Safety and Speed. LOHAAR Innovative state of the art technology is faster for manufacturing and erecting LGFS buildings on a turnkey basis in the supervision of various highly qualified Engineer's, Architects using the core strength of Light Gauge Steel .This Framing System allows multiple applications across commercial and residential sectors so in addition to the lower initial cost and faster delivery, you have to deal with one company LOHAAR for the design and fabrication of your dreams world.



# DESIGNING AND MANUFACTURING

## DESIGNING

LOHAAR has the best-class designing and engineering office, manned by team of experienced professional's equipped with British latest software SCOTSTEEL, SCOTTRUSS, SCOTRF, SCOTPANEL .

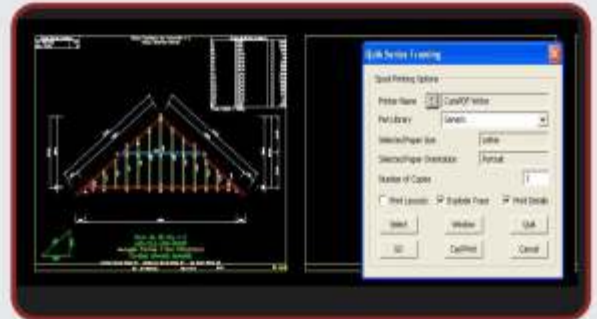
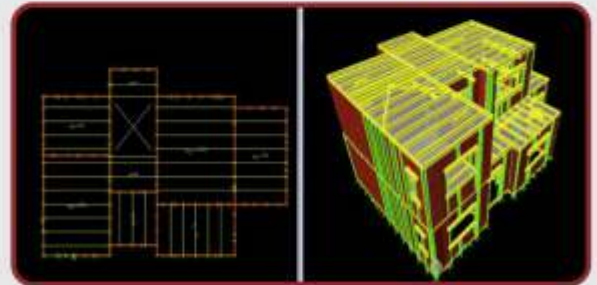
## MANUFACTURING FACILITIES

All buildings are manufactured with the help of automatic SCOTTRUSS 600 RF6 Roll former machine and also designed, erected in accordance with applicable latest editions of Indian and British codes and standards are follows.

- \* Indian Standard IS 801: 1975
- \* British Standard BS 5950 (Part 5)
- \* British Standard BS 5950 (Part 1)
- \* Indian Standard IS 875 : 1987 (Part-1,2,3)
- \* IS 1893 (Part 1):2002 (Part – 1)

## APPLICATIONS

- \* Rehabilitation Camps
- \* Hostel building
- \* Sample Flats / Marketing Office
- \* Residences / Bungalows
- \* Additional floor on the terrace
- \* A cottage in a farm house or a hill area
- \* Office inside a warehouse or factory
- \* Retail outlet, Guard room
- \* Internal partition walls inside an orthodox
- \* Office Building, Residential Societies
- \* Mass Housing



## COMPONENTS OF LGFS

### FRAMES & MEMBERS

Its sections was made of Cold rolled galvanized steel with coating that are corrosion resistant.



### EXTERIOR AND INTERIOR FINISHES

- \* Metal roofing's
- \* Exterior grade cement board walls
- \* Metal wall cladding
- \* Glazing wooden panels for interior
- \* Cement fiber board for interior
- \* Flooring tiles
- \* Fiber & gypsum false ceiling



### ADVANTAGES

- \* Structural steel's low cost, high strength & durability,
- \* design flexibility, adaptability and recyclability
- \* Cost Efficient And Quick to Build
- \* Environment Friendly
- \* Termite proof
- \* Fire Resistance
- \* Earth quake and wind resistance
- \* Energy Efficiency